



AZTRANSFER PARTNERSHIP REPORT

2016-2017 ACADEMIC YEAR | PREPARED FOR YAVAPAI COLLEGE BY AZTRANSFER



2017

AZTRANSFER & YC PARTNERSHIP REPORT

2016-2017

CONTENTS

| | |
|--|----|
| ABOUT THIS REPORT | 4 |
| MEMBERSHIP | 6 |
| ARTICULATION TASK FORCES | 8 |
| DATA REPORTING | 10 |
| COURSE EVALUATION | 12 |
| CURRICULUM APPROVAL & FORM ROUTING | 14 |
| SUMMIT | 16 |
| MARKETING & OUTREACH | 18 |
| PUBLICATIONS & RESOURCES | 20 |
| CONTACTS | 22 |



ABOUT THIS REPORT

A MESSAGE FROM KELLY ROBLES, AZTRANSFER EXECUTIVE DIRECTOR

AZTransfer supports Arizona's public postsecondary institutions in their endeavors to increase degree attainment through community college to university transfer. AZTransfer develops processes and resources to help institutions achieve transfer goals and ensure the continued success of the Arizona Transfer System.

AZTransfer member institutions are each as unique as the communities they serve, and AZTransfer takes pride in tailoring our services to meet individual needs. This annual partnership report identifies, summarizes, and archives the key contributions made to your institution by AZTransfer staff, with the support of all AZTransfer institutions, in the 2016-2017 academic year.



Kelly Robles
Executive Director





MEMBERSHIP

AZTransfer's organizational structure is built around multi-institutional collaboration throughout all of our committees and workgroups. By bringing all 15 higher education institutions together, AZTransfer is well-positioned to implement meaningful change to positively impact the student transfer experience. These committees represent a variety of educational interests including strategic planning, academic advising, admissions/records, curriculum planning, and data and evaluation.

AZTransfer is organized into several key bodies including a Steering Committee, AZTransfer Facilitators, and Articulation Task Force (ATF) faculty/staff representatives. These groups are the collective membership of each of our 15 higher education institutions in Arizona. It is a point of pride for AZTransfer that each of our 50+ committees has at least one representative from our participating institutions. This in-kind commitment of time and effort is made voluntarily by each school and is a testament to the value they place on the work that we do.

2016-2017 MEMBERSHIP NUMBERS

| TYPE OF MEMBER / CONTACT | YC | ALL INSTITUTIONS |
|---|----|------------------|
| Total Number of AZTransfer Members | 54 | 1,751 |
| ATF Faculty | 41 | 1,290 |
| ASSIST | 5 | 84 |
| Academic Advising ATF | 2 | 75 |
| Admissions & Records ATF | 1 | 64 |
| General Education ATF | 2 | 39 |
| Communities of Interest | 2 | 158 |
| 15 or More Years of Service to AZTransfer | 7 | 148 |



ARTICULATION TASK FORCES

AZTransfer manages 41 discipline specific Articulation Task Forces (ATFs) comprised of over 1,700 individual participants who meet annually. ATFs consist of faculty members appointed by their institution to represent both the institution and their specific academic discipline(s). ATFs serve as a forum for public community colleges and universities to cooperatively exchange articulation information in a timely manner in order to actively participate in the implementation of the Arizona Transfer System.

Below is a summary of institutional participation in the Articulation Task Forces for the 2016-2017 academic year identifying facilitators, chairs, and hosts for given disciplines.

PARTICIPATION PROFILE

ATTENDED: 30 ABSENT: 9 NO PROGRAM: 5

FACILITATED MEETINGS

Institutions designate an ATF Facilitator who has responsibilities institutionally and statewide for managing the operational procedures supporting transfer articulation in Arizona. Facilitators provide oversight and coordination of processes and procedures related to ongoing maintenance of course equivalencies and transfer tools. Facilitators ensure faculty and staff are familiar with the Arizona Transfer System.

YC FACILITATED MEETINGS

| DISCIPLINE | FACILITATOR |
|---------------------------|------------------|
| Early Childhood Education | Patti Schlosberg |
| Geology | Patti Schlosberg |
| Nursing | Patti Schlosberg |



AZTransfer Facilitators at the 2016-2017 training retreat in Flagstaff, AZ

CHAired MEETINGS

Faculty from each institution voluntarily chair ATF meetings each academic year. Responsibilities of the chair include communicating meeting information and agenda to ATF members, coordinating and leading discussion of business items, and working with the assigned AZTransfer Facilitator to ensure accuracy and appropriate meeting documentation.

YC CHAired MEETINGS

| DISCIPLINE | CHAIR |
|-------------------------|------------------|
| Chemistry | Paul Smolenyak |
| Journalism & Media Arts | Helen Stephenson |

HOSTED MEETINGS

Institutions voluntarily host ATF meetings each academic year. Responsibilities of hosts include scheduling rooms, setting up teleconference equipment, providing refreshments/lunch, communicating signage and parking details, recommending lodging for traveling faculty, and making special accommodations when applicable.

YC HOSTED MEETINGS

| DISCIPLINE | HOST |
|---------------------------|-------------------------------------|
| Early Childhood Education | Le Anne Lawhead and Tara O'Neill |
| Education | Tara O'Neill |
| Geology | Beth Nichols Boyd |

DATA REPORTING

AZTransfer prepares approved reports and supplies ad hoc data to the institutions related to transfer students and their enrollment at the colleges and universities, utilizing the Arizona State System for Information on Student Transfer (ASSIST). In addition to reports regularly made available to each institution via a web portal, AZTransfer is asked by individual institutions to provide institution specific data to meet grant requirements. This includes data on outcomes of Reverse Transfer students, data for the Western Alliance to Expand Student Opportunities grant project to analyze student course progression, and data on student transfers in STEM programs.

ASSIST is a relational database containing enrollment and degree information on students attending Arizona's public universities and community college districts. The public universities and colleges submit prescribed data files to AZTransfer, each containing data about students enrolled at their institution and degrees received. Using an eight-step algorithm, AZTransfer processes the submitted students to determine the ASSIST student identification number and adds the data to the database, thus providing the institutions with the capability to track their students as they attend institutions around the state without identifying the specific student. The ASSIST Steering Committee oversees ASSIST usage. Each institution appoints a Data Contact who is responsible for submitting the prescribed data files.

DATA PROCESSED 2016-2017

| TYPE OF DATA | YC | ALL INSTITUTIONS |
|--|--------|------------------|
| Number of Files Loaded Into ASSIST | 3 | 134 |
| Number of Records (Student Enrollments and Degrees Loaded Into ASSIST) | 49,568 | 5,816,648 |
| Number of Students Processed for ASSIST Student ID Number | 11,795 | 773,508 |
| Number of Revised Files Loaded to Replace ASSIST Data | 0 | 6 |
| Number of Revised Records (Students) Loaded to Replace ASSIST Data | 0 | 154,820 |

STANDARD REPORTS

The first goal of ASSIST is to provide information to assess the effectiveness of Arizona's general education curriculum and transfer model. AZTransfer prepares several reports throughout the year for each institution that report on the number of the institution's students that transferred to the universities, and the number of their transfer students that received baccalaureate degrees. These reports are distributed by AZTransfer to both the ASSIST and AZTransfer Steering Committees. The information in ASSIST is also available to participating institutions directly, so that institutions may produce reports that meet their specific need.

STANDARD REPORTS 2016-2017

| TYPE OF DATA | YC | ALL INSTITUTIONS |
|---|----|------------------|
| New Transfers by Ethnicity, Gender, Age Group, Entry Transfer Hours, Discipline, Academic Preparation | 2 | 36 |
| Baccalaureate Degree Recipients by Ethnicity, Gender, Age Group, Entry Transfer Hours, Discipline, Academic Preparation | 2 | 36 |

SPECIAL PROJECTS

AZTransfer generates custom reports and projects at an institution's request.

YC SPECIAL REPORTS & PROJECTS

DESCRIPTION

Special Report – Course Progression Flat-File for All SUN Courses

OTHER REPORTS & PROJECTS

In addition to standard reporting, AZTransfer prepares reports requested by the ASSIST Steering Committee, such as when all institutions are asked to prepare a report for an external entity or when a new report is requested. AZTransfer will access ASSIST on behalf of the individual institutions and prepare the same report for each institution. Examples of this type of reporting completed in 2016-2017 include a comparison of the performance of new transfers in their junior year to the junior year performance of new freshman, the reporting of performance in subsequent courses at the universities in the same discipline as the community college course, and a report of baccalaureate degree recipients with any Arizona community college credits.

OTHER REPORTS 2016-2017

| TYPE OF DATA | YC | ALL INSTITUTIONS |
|---|-------|------------------|
| ABOR Enterprise Metrics: New Transfers, Baccalaureate Degree Recipients, Four-Year Graduation Rate | 0 | 6 |
| Enterprise Metrics: Four-Year Graduation Rate by CC Transfers | 1 | 23 |
| NHE Transfer Rate: General Cohort, Transfer Intent Cohort, Transfer Behavior Cohort, Three-Year, Four-Year, Five-Year and Six-Year Transfer Rate | 2 | 34 |
| New to Higher Ed Cohorts: Number of Students in Cohorts | 1,799 | 62,094 |
| New Transfer Graduation Rate; New Transfers' Three-Year, Four-Year, and Six-Year Graduation Rates by Ethnicity, Gender, Age Group, Entry Transfer Hours | 1 | 23 |
| Baccalaureate Degree Recipients with any AZCC Transfer Hours: Transfer Hours at Graduation | 1 | 23 |
| Course Progression: Performance in University Courses in Same Discipline as Community College SUN Course | 1 | 19 |
| Institution Comparison: For Standard New Transfer and Baccalaureate Degree Recipients Reports, Totals for Individual Rural/Urban Institutions | 1 | 19 |
| Junior Year GPA Comparison: New Transfers, New Freshman, Other Transfers | 1 | 23 |
| New Transfers' First Year Performance: Cumulative GPA, Credit Hours Earned, Persistence | 1 | 23 |



COURSE EVALUATION

The Arizona Course Equivalency Tracking System (ACETS) is a web-based application that tracks course equivalency decisions, including SUN courses, as the courses move through the statewide evaluation and articulation process. ACETS supports all decision-making required to establish equivalencies in Arizona beginning with the initial request for an equivalency evaluation and ending with the creation of a report to be used by Arizona university encoders. ACETS tracks the timeframe for course equivalency from source institution to target institution and triggers a report to target institutions when timelines are outside normal boundaries. A target school records its decision in ACETS within 45 days and encodes it within 15 days. Institutions can check recent information activity by querying the database.

SUMMARY BY FORM TYPE

NUMBER OF FORMS SUBMITTED BY YC 2016-2017

| FORM NAME | NUMBER |
|-----------------------|--------|
| New Course Form | 0 |
| Modified Course Form | 4 |
| Editorial Change Form | 0 |
| Course Deletion Form | 6 |
| Data Cleanup Form | 4 |
| CEG Cleanup Form | 0 |
| Exam Change Form | 0 |
| SUN Action Form | 0 |

ACETS EQUIVALENCY COMPLETION REPORT

TOTAL YC SUBMISSIONS: 14



| | |
|-----------------------|---|
| Direct Equivalency | 4 |
| Departmental Elective | 0 |
| Elective Credit | 0 |
| Not Transferrable | 0 |
| Pending | 0 |



| | |
|-----------------------|---|
| Direct Equivalency | 6 |
| Departmental Elective | 1 |
| Elective Credit | 1 |
| Not Transferrable | 0 |
| Pending | 0 |



| | |
|-----------------------|---|
| Direct Equivalency | 2 |
| Departmental Elective | 0 |
| Elective Credit | 0 |
| Not Transferrable | 0 |
| Pending | 0 |



CURRICULUM APPROVAL & FORM ROUTING

The Academic Curriculum Review and Evaluation System (ACRES) is available for Arizona institutions to use for their formal internal curriculum review and evaluation process. Curriculum approved through ACRES can be submitted directly to ACETS with a single click. Other institutional processes can also be deployed in ACRES such as Program Approval forms, Institutional Degree/Certificate forms, Employee Development and more.

ACRES is not currently being utilized at your institution. Unlike ACETS, ACRES is not mandated by the state for use. It is optional software if your institution has a need for an online curriculum and programmatic approval process. ACRES was developed in 2002, and is currently being used by these AZTransfer institutions:

- Arizona State University
- Arizona Western College
- Central Arizona College
- Chandler-Gilbert Community College
- Coconino Community College
- Estrella Mountain Community College
- GateWay Community College
- Glendale Community College
- Maricopa Community Colleges
- Mesa Community College
- Mohave Community College
- Northland Pioneer College
- Paradise Valley Community College
- Phoenix College
- Pima Community College (in pilot phase)
- Rio Salado College
- Scottsdale Community College
- South Mountain Community College
- University of Arizona



AZTRANSFER SUMMIT

The AZTransfer Summit is a conference for faculty and transfer professionals in Arizona public postsecondary education to convene and network, share best practices, explore trends in transfer, and learn more about the Arizona Transfer System. The fourth annual Summit was held April 13-14, 2017 at the WeKoPa Resort in Scottsdale, AZ. The conference theme, Higher Degrees in Our Forecast, focused on the ways the Arizona Transfer System and activities of its member institutions contribute to increasing degree completion in Arizona.

SUMMIT ATTENDANCE

TOTAL ATTENDANCE: 276

ATTENDEES FROM YC: 10

PRESENTERS FROM YC

Comprehensive Transfer Planning for Community College Students

Scott Nardo

Academic & Career Advisor | Yavapai College

Making Every Concurrent Enrollment Class Count: A Closer Look at Transfer Advising in the High School

Heather Mulcaire

Director of Recruitment and Early College Programs | Yavapai College

Patrick Weller

Principal | Arizona Agribusiness Equine Center

Chelsie Klaine

Early College Academic Advisor | Yavapai College





MARKETING & OUTREACH

Part of AZTransfer's marketing and communications plan includes participation in college fairs, transfer fairs, and conferences that connect AZTransfer with students, families, counselors, advisors, and educational professionals statewide. Below is a summary of AZTransfer's participation in these events in your region and in events that serve the entire state.

SUMMER 2016

WORKSHOP

AZTransfer Workshop for Admissions and Recruitment Professionals

YC Participants: 1

FALL 2016

YAVAPAI COUNTY - HIGH SCHOOL VISITS

Bradshaw Mountain High School
Camp Verde High School
Mingus Union High School
Sedona Redrock High School

REGIONAL COLLEGE FAIRS

Northern Arizona Regional College Night
Phoenix NACAC College Fair

TRANSFER FAIRS

Yavapai College - Prescott

ADVISOR TRAINING

Yavapai College - Prescott

STATE AND REGIONAL CONFERENCES

Arizona ACT Conference



In July 2016, AZTransfer hosted a workshop for Arizona admissions and recruitment professionals that was attended by 47 representatives from across the state.

SPRING 2017

TRANSFER FAIRS

Yavapai College - Prescott

ADVISOR TRAINING

Yavapai College - Prescott

REGIONAL COLLEGE FAIRS

Phoenix RMACAC

STATE AND REGIONAL CONFERENCES

Arizona School Counselors Association
Annual Conference

DISTRIBUTION OF MARKETING MATERIALS

AZTransfer provides marketing collateral and promotional items to each member institution by request. The materials are used in orientation packets, during advising sessions, as a compliment to recruitment and outreach efforts, and more. A description of marketing collateral is included in the next section. Below is a list of the materials sent to your institution in 2016-2017

| INSTITUTION | BROCHURES | AGEC CARDS | BOOKMARKS | TOTAL |
|-----------------|-----------|------------|-----------|-------|
| Yavapai College | 2,500 | 2,500 | 0 | 5,000 |



PUBLICATIONS & RESOURCES

AZTransfer produces several annual publications designed with several different audiences in mind. Below is a list of the publications produced in 2016-2017.

MARKETING COLLATERAL



BROCHURE

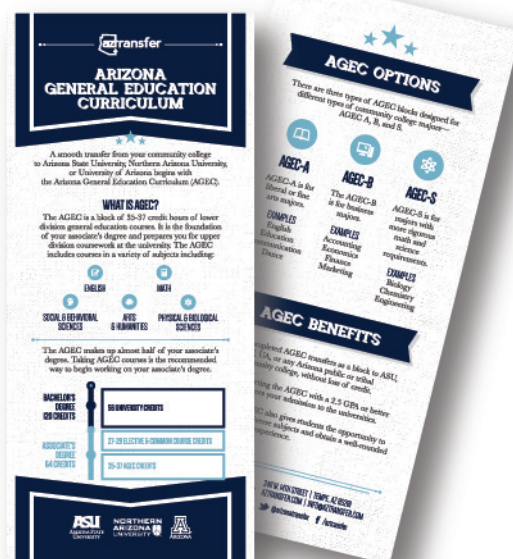
This brochure explains the many tools and resources on AZTransfer.com that support successful transfer in Arizona.

AUDIENCE: High school students, community college students, parents, counselors, advisors.

AGEC REFERENCE CARD

This card provides an overview of the components of the Arizona General Education Curriculum and its benefits.

AUDIENCE: High school students, community college students, parents, counselors, advisors.



REPORTS & MANUALS



JLBC REPORT

In accordance with ARS 15-1824, AZTransfer prepares this annual report to the Joint Legislative Budget Committee on the progress toward improving articulation and transfer in Arizona. This report is published and distributed to stakeholders statewide in December. It is available in print and online.

ASSIST REPORTS

ASSIST produces four standard reports annually. These reports, available online, are:

- Arizona Statewide Transfer Student Profile Summary
- Baccalaureate Degree Recipients from Arizona Community Colleges
- New Transfers from Arizona Community Colleges
- AZTransfer Key Performance Indicators

| Characteristics | 2009-10 | 2010-11 | 2011-12 | 2012-13 | 2013-14 | 2014-15 | Five Year % Change |
|---|---------|---------|---------|---------|---------|---------|--------------------|
| Total AZCC Basic Degree Recipients | 8,393 | 8,819 | 8,872 | 9,287 | 9,414 | 7,893 | 87.8% |
| Ethnicity | | | | | | | |
| African American | 204 | 252 | 265 | 309 | 294 | 329 | 61.3% |
| American Indian | 143 | 188 | 196 | 223 | 221 | 240 | 67.8% |
| Asian | 236 | 233 | 304 | 298 | 387 | 334 | 41.5% |
| Pacific Islander ** | 1 | 3 | 6 | 39 | 27 | 29 | 3803% |
| Hispanic | 1,234 | 1,248 | 1,402 | 1,516 | 1,522 | 1,721 | 39.9% |
| White | 4,086 | 4,205 | 4,375 | 4,545 | 4,715 | 4,688 | 15.9% |
| International | 62 | 70 | 81 | 109 | 94 | 88 | 7.3% |
| Unknown | 427 | 361 | 228 | 141 | 119 | 74 | -82.7% |
| Total Minority | 1,816 | 1,934 | 2,103 | 2,340 | 2,491 | 2,593 | 43.5% |
| Gender | | | | | | | |
| Female | 3,860 | 3,630 | 3,759 | 3,331 | 4,056 | 4,167 | 13.9% |
| Male | 2,733 | 2,889 | 3,113 | 3,206 | 3,358 | 3,346 | 22.4% |
| Age Group | | | | | | | |
| Less than 25 | 410 | 420 | 444 | 402 | 513 | 444 | 8.2% |
| 25 - 34 | 3,020 | 3,066 | 4,010 | 4,364 | 4,387 | 4,158 | 4.9% |
| 35 - 39 | 1,040 | 1,113 | 1,196 | 1,288 | 1,379 | 1,435 | 35.1% |
| 40 or older | 1,023 | 1,080 | 1,222 | 1,342 | 1,435 | 1,556 | 52.1% |
| AZCC Transfer Hours at Entry *** | | | | | | | |
| 12 to 23 hours | 541 | 492 | 543 | 539 | 496 | 440 | -18.7% |
| 24 to 34 hours | 593 | 604 | 621 | 634 | 540 | 540 | -7.4% |
| 35 to 44 hours | 2,377 | 2,316 | 2,346 | 2,367 | 2,336 | 2,166 | -7.7% |
| 45 or more hours | 2,862 | 3,036 | 3,333 | 3,863 | 3,952 | 4,358 | 50% |

NOTES

* Students with 12 or more AZCC credits who entered an Arizona university as new transfers in a fall or spring semester.

** Student Ethnicity of Pacific Islander was not captured in a separate category prior to 2010-11.

*** Students may have additional transfer hours from other 2-year or 4-year postsecondary institutions.

Academic year includes summer, fall and spring semesters.

SOURCE

ASSIST Data Warehouse, January 2015



USER MANUALS

AZTransfer offers four user manuals: the ATF Handbook & Policy Manual, Website Users Manual, Technology Users Manual, and the ASSIST Users Manual. These manuals can be accessed online via the Faculty/Staff portal page.

CONTACTS

The individuals listed below are key contacts for questions about AZTransfer.

STEERING COMMITTEE

Ron Liss

Vice President for Instruction and Student Development
ron.liss@yc.edu
(928) 717-7778

AZTRANSFER FACILITATOR

Patti Schlosberg

Curriculum & Articulation Coordinator
patti.schlosberg@yc.edu
(928) 776-2005

ASSIST STEERING COMMITTEE

Tom Hughes

Director, Office of Institutional Research
tom.hughes@yc.edu
(928) 776-2205

AZTRANSFER STAFF

Kelly Robles

Executive Director
kelly@aztransfer.com
(480) 731-8781

Helena Babiski

Program Coordinator
helena@aztransfer.com
(480) 731-8780

MARKETING & OUTREACH

Erin Woodell

Director of Marketing & Communications
erin@aztransfer.com
(480) 731-8782

TECHNOLOGY & ASSIST

Rebecca McKay

Sr. Director of Technology & ASSIST
rebecca@aztransfer.com
(480) 731-8783

Tracy Salter

Sr. ASSIST Data Analyst
tracy@aztransfer.com
(480) 731-8784



2411 W. 14TH STREET | TEMPE, AZ 85281 | AZTRANSFER.COM | INFO@AZTRANSFER.COM

 [@arizonatransfer](https://twitter.com/arizonatransfer)  [/aztransfer](https://facebook.com/aztransfer)